



Parkland Village School

28, 53222 Range Road 272, Spruce Grove, Alberta T7X 3X6

TEL: 780-962-8121 Email Address: parklandvillage@psd.ca

Website: <http://parklandvillage.psd.ca>

Parkland School Division - Our Vision

Our students possess the confidence, resilience, insight and skills required to thrive in, and positively impact, the world.

Parkland School Division - Our Mission

We assure supportive learning environments, meaningful experiences and healthy relationships that create opportunities to develop resilience, to gain diversity in perspectives and to achieve enduring success.

Our Ultimate Goal:

The Reward for Getting There -

Student Success and Well-Being

Our Values

What Guides Us –

Learning opportunities are purposeful, essential, relevant, authentic and responsive.

Excellence in achievement.

Trustworthy, respectful relationships; and Resilience with self-awareness.

Parkland School Division - Our Priorities

Student Wellness & Workplace Wellness

Both student wellness and workplace wellness are priorities for us.

PSD's Ultimate Goal: Student Success and Well-being highlights how important student wellness is. A healthy school approach is one that supports the health and well-being of students and the entire school community. EVERYONE plays a role in supporting student wellness.

Healthy organizations and workplaces are at their best when they are made up of people who are healthy. Wellness is a very personal concept that can mean many things to different people, but workplace wellness is about how you feel about your work, the workplace environment, and the climate and culture within it.

Equity, Diversity & Community

Although PSD's tagline is 'Where the World Opens up', the world doesn't open up to all members of our communities until our minds open up to all members of our communities. A continual progression toward equity, and the promotion of anti-racism, are essential components of a caring, respectful and safe school division. All members of the PSD community are expected to demonstrate, and ensure, that a sense of belonging, for all staff, students and community members, exists in all places.

Indigenous Perspectives and Ways of Knowing

PSD is building relationships with Indigenous communities that increase understanding of their experiences, and therefore increase attendance rates, academic completion, and a sense of belonging for Indigenous students. In addition, we need to learn the history of our continent that predates colonialism - we have a responsibility to listen to the stories of the Elders and to increase our understanding beyond what we were taught in school, and to bring those perspectives into our day-to-day work and learning.

Programming and Pedagogy

Student programming and continual improvement of teaching practices continues to be a priority for PSD. The Division is proud to offer diverse programs to students because that's how learning comes alive for them. Programs showcase the breadth of the work. The depth of our work gets recognized in our attention to pedagogy.

Parkland Village School is proud of the educational opportunities we provide our students with and the culture that has been created at Parkland Village School. In everything we do, we do what is best for students.

Innovative Learning

"Learning and innovation go hand in hand. The arrogance of success is to think that what you did yesterday will be sufficient for tomorrow."

- William Pollard

- Technology Integration - we have one-to-one technology provided for Grades 1-6
- Personalized, Authentic Learning
- Critical Thinking
- Tinker Lab

Programming at Parkland Village School has an emphasis on language and math literacy through all grades. The school follows the Alberta Education Program of Studies, preparing students for education at higher grade levels.

Student Leadership

"Leadership and learning are indispensable to each other."

- John F. Kennedy

- Focus on Character Development
- Classroom and school leadership opportunities
- Kindness projects

Student Success

"When you catch a glimpse of your potential, that's when passion is born." - Zig Ziglar

- Levelled Literacy Intervention
- Levelled Home Reading
- Numeracy Intervention groups
- Inclusive Education Lead
- Sensory Room
- Social Skills and Friendship Groups
- Lunch intramurals

Stay Connected

"In this complex world, it takes more than a good school to educate children. And it takes more than a good home. It takes these two major educational institutions working together." - Dorothy Rich

Our door is always open.

Come pay us a visit or give us a call!

Classroom communication digital tools

Weekly Digital Newsletter

Facebook - bit.ly/m.vsfaceJ:>ook

Our Community

"We cannot always build the future for our youth, but we can build our youth for the future." - Franklin Delano Roosevelt

- Before & After School Care
- School Council
- Hot Lunch Program
- Breakfast Program
- Nutrition Nook

Parkland Village School

"Where the World Opens Up"

Parkland Village School had its inaugural year in 1984. Built in the mobile home community of Parkland Village, Parkland Village School is a small K-6 elementary school. Parkland Village School has a population of approximately 160 students. The school functions as the center of the community.

A true strength for Parkland Village School is the staff. The staff is extremely dedicated to the education and well-being of the student population and works closely as a team towards that end. The staff recognizes that professional development is a key component to staying on top with educational practice and delivery. Each year the staff identifies areas for professional development/growth and work in those areas.

Community/parent volunteers are a vital part of the school. Parents supplement the activities and programs at the school making available opportunities that are beneficial additions to the learning and development of the students. It is through their efforts that the school is able to offer additional educational opportunities and resources that benefit the educational experience for all.

Parkland Village School believes in the notion of a community school. Building a community that supports learning and social values takes the involvement of all working together. We are an inclusive school that strives to personalize learning for all our students.

Bell Schedule

8:00 a.m. first bell

8:05 a.m. classes begin

9:40 - 9:55 a.m. recess

11:45 - 12:15 p.m. lunch recess

12:15-12:35 p.m. lunch

12:35 p.m. classes begin

2:35 p.m. students dismissed

Office Hours - 7:30 AM - 3:30 PM

After school, students are required to go directly home or to their childcare provider. We appreciate your cooperation in this safety-focused arrangement.

Parkland Village School hosts a Before and After School Care Program. Please contact Cindy Van Beers at 780-918-7825 for further information and to register.

Absentee Check

If your child is going to be absent from school, please **write a note to the classroom teacher in the Student Agenda, send an email to louise.dworak@psd.ca or call the school at 780-962-8121 to let us know.** The school secretary will be available to take your calls after 7:30.

To ensure that no child is lost or experiencing problems on the way to school, we will make every effort to contact parents. If you let us know ahead of time this will prevent us from having to disturb you with a phone call from the school to check on the whereabouts of your child. Thank you for your cooperation. Calls will be made prior to 9:00 a.m. Students who are late are asked to check into the office as soon as they arrive at school.



Cold Weather

During cold weather, please be certain that your child is dressed well enough to spend time playing outside during recess and lunch hour. On cold days, it is best if students plan on arriving at school close to bell time in the morning. When it is extremely cold, students are allowed to stay in their classrooms during recess. Students are dismissed at 2:35 p.m. and asked to go directly home or to their childcare provider. Even though buses are running, and school is open, the final decision to send your child to school rests with you. If you, as a parent, think the weather conditions make it unsafe for your children to attend school, please keep them at home.

Dress Code

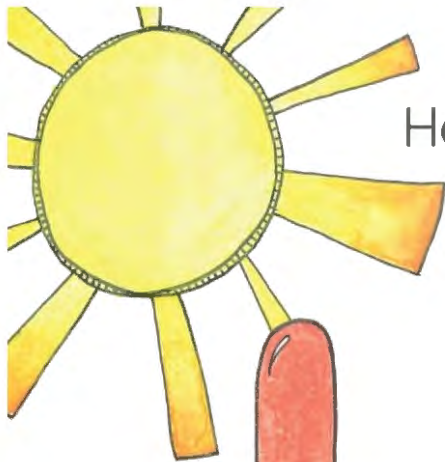
Parents and students are reminded that clothing must be appropriate for a public place. Students may be asked to change if their clothing is deemed inappropriate. This would include:

- t-shirts/shirts with inappropriate or offensive material stenciled on them (related to drugs, suggestive language, alcohol, violence, etc.)
- clothing that is too revealing.

Indoor Footwear

All students require one pair of indoor **non-marking running shoes**, to be left at school.

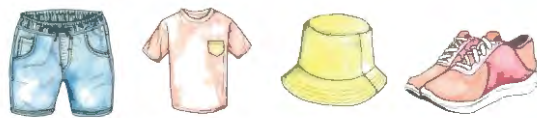




How to Dress for the Weather Guide

Outdoor play is a great way to support healthy growth and development. Opening the doors to outdoor play in all kinds of weather provides children and adults with opportunities to spark their curiosity, leading to wonder, exploration and learning. When children have the right clothing for the season it contributes to them having positive, rich outdoor play experiences that just can't happen indoors. Get outside, be curious, let children lead and have fun!

20°C



10°C



0°C



-10°C



-20°C



Supporting Outdoor Play Year Round



www.getoutsideandplay.ca



www.befitforlife.ca

HOMework

Daily Expectations

Homework for students is generally home-reading on a daily basis. Students may also be assigned some work tasks to complete at home and students who wish to take work home for completion will certainly be encouraged to do so. Parents may also request additional work in any area they feel may be important in supporting their child's learning.

We are open to working with families to support the learning of the children we serve.

School Responsibilities

Each student has a Student Agenda to help organize their time, report on their learning and help in developing self-reliance.

Time is provided each day for the recording of home/school communication. Ongoing monitoring will take place within each classroom.

ALLERGY AWARENESS

Each year we publish the list of allergies for each classroom. Please help us keep our learning environment safe for all.

ILLNESS, STUDENT ACCIDENTS, EMERGENCIES

Normally, children who are too ill to participate in regular classroom activities or to go outside for recess are too ill to be at school. This is particularly true in cases of severe colds, infections, headaches, etc. With severe colds and other infections, students are unable to function well at school, and they would recuperate faster at home. As well, they are a source of infection for other children and staff.

Please use the diagram below as a guideline to assist in making your decision to keep your child home or not. The following procedures will be followed in the case of sickness, accidents or other emergencies:

- phone a parent at home/on your cell phone
- phone a parent at work
- phone the emergency contact

Therefore, it is **extremely important** that the school has **current phone numbers** for all contacts. Call 780-962-8121 with any changes.

Too Sick for School?

COME TO SCHOOL WHEN	COME TO SCHOOL WHEN	COME TO SCHOOL WHEN	COME TO SCHOOL WHEN	COME TO SCHOOL WHEN	COME TO SCHOOL WHEN
Cough is mild and infrequent or is related to allergies.	Have a mild rash but no itching and/or fever.	Free from diarrhea and vomiting for at least 24 hours.	Have a sore throat but no other symptoms.	Have infection but began antibiotic drops/ointment at least 24 hours ago.	Fever-free for 24 hours without using fever-reducing medication.
					
COUGHING NOT ALLERGY RELATED	RASH	DIARRHEA/ VOMITING	SORE THROAT	EYE INFECTION	FEVER
STAY HOME IF Coughing won't stop or having other breathing problems.	STAY HOME IF Have a body rash with itching and/or fever.	STAY HOME IF Experienced diarrhea or vomiting within the past 24 hours.	STAY HOME IF Have a sore throat with persistent cough and/or fever.	STAY HOME IF Eye is red and oozing a yellow or green discharge.	STAY HOME IF Have a temperature of 100°F (37.8°C) or higher.

Still not sure? Call the school office for help.





All students have a scheduled library class once a week, although students may be brought in at other times for projects and research. We strive to introduce many types of literature, varied authors and illustrators and their works, and explore different themes.

Students are responsible for the care and safe return of their library materials. The students are reminded how to care for their books and we ask that parents reinforce these guidelines at home:

- Wash hands before reading.
- Do not lay a book on a table that has food or drink.
- **Have a special place in the home for keeping library books so that they do not get lost** (preferably a place that is out of reach from younger children).
- We provide a strong plastic bag in your child's backpack to protect library books from accidental spills and crumbs (**do not place your child's book in the home-reading bag, as the books are returned to different areas and can be misplaced**).
- Students with overdue or lost/damaged library materials may have library privileges removed until their materials are returned or paid for.

It is a fact that children of all ages benefit educationally and emotionally when family members read with them daily. Your child will look forward to the shared reading time for their closeness to you as well as to see what happens next in the story. Please share reading time with your child daily, even 15 minutes a day is of benefit.

Hot Lunch

We continue to have health and wellness as a focus in our school and try to include this in our Hot Lunch Program. You can order and pay for your Hot Lunch using our order form. Please watch newsletters or call the school for more information on the hot lunch program.

Lunch and Snack

Children are to bring their own water bottle, snack and lunch daily. You may send a thermos along with their lunch to provide them with something warm to eat as we do not have the facilities to warm up food for the children.

Cell Phones and Personal Devices

- We believe technology is a wonderful **tool** for learning
- We believe in teaching, modeling and reinforcing digital citizenship
- We believe students should have access to technology for learning in the classroom and we provide 1:1 technology (IPAD's or Chromebooks)
- Technologies are available for learning in the classroom.
- Students need to check in with their teachers when would be a good time to use their device to facilitate learning.
- In accordance with Alberta Education's ministerial order limiting the use of cell phones and personal devices (including Smart Watches) in schools, we will require all students to keep their phones and personal devices out of sight and powered off during the school day (between 8:05 AM and 2:35 PM). If you as parents/guardians need to reach your children, please call the office 780-962-8121. Also, if your children need to reach you, they are welcome to use the school phone to do so.
- If a child brings a personal device from home, the school is not responsible if the device gets broken, goes missing etc. Bringing a personal device to school is a personal risk.
- Students are not required to bring personal devices to school. This is optional.
- If a student has a device outside or in the hallway, an adult will ask them to put it in their backpack.
- If the device is still not put away, then the device will remain in the office for the remainder of the day.
- After the third time of the device not being used according to this BYOD policy, the device will remain in the office until a parent picks it up.

Student Toys and Valuables

Students are reminded to leave personal items such as toys, stuffed toys and jewelry at home. The school cannot be responsible for personal items that are broken or go missing.

Volunteers/Parent Helpers

Teachers will have the responsibility for coordinating duties for volunteers working within the classroom and within the school.

Teachers will be responsible for assigning parents to duties such as:

- Working with individuals or groups of students.
- Preparation of materials.
- Any other required duties inside or outside the classroom.

Parents are encouraged to identify where their skills might best be utilized or how they might be of help to the teacher, but the final decisions regarding volunteer placement rest with the teacher.

As part of Parkland School Division Policy: Organization and Culture 316, August 29, 2022, all volunteers shall:

- **Complete a Volunteer Registration Form**
- **Providing a Criminal Record Check**
- **Sign a Confidentiality Agreement**

Classroom Help

A volunteer form will be given to each parent to indicate ways you'd like to become involved.

They include the following:

- Help prepare instructional materials (at school or home)
- Help with celebrations in the classrooms (e.g. Halloween, Christmas, Valentine's Day, Easter, and End of the Year).
- Accompany the class on a field experience.
- Help with special class projects (e.g. science experiments).
- Assist children with their learning (e.g. listening to a child read).
- Share a talent, skill, or information with small or large groups of students.
- Assist students during Center time.
- Help with general classroom upkeep.

Behaviour Expectations

As a school, we are committed to creating and maintaining a healthy, positive, safe, caring and inclusive learning environment for everyone. This means we will work hard to help everyone in our community act with strong character and do what is right. This involves clearly defining and teaching expectations and the skills required for success, encouraging and celebrating good choices, and responding to inappropriate behaviour with a focus on problem solving, personal accountability and restorative principles.

If any patterns of behaviour or concern emerge, we as a school will reach out to our families so we can partner to help the students achieve success. Also, if families are aware of any changes at home that may affect the child's success at school, please reach out to the school.

Together Making a Difference

To help your child have a successful year at Parkland Village School, we need to work together:

Student Role:

- Come with a positive attitude, ready to do your best.
- Complete all assigned work. Be kind to others.
- Resolve conflict without using violence. Respect those in authority.

School Role:

- Plan meaningful and appropriate learning activities designed to help students succeed in their learning and growth.
- Communicate with families regarding your child's progress.
- Know our students and help each one find success. Provide a rich program that offers a variety of learning and extracurricular opportunities for students.
- Provide a safe, clean and positive environment.

Parental Role:

- Provide healthy routines at home, including sleep, healthy diet, and limits in technology.
- Ensure your child attends school regularly. Show interest in your child's learning and life at school.
- Check or ask about daily work (student agendas, home reading, etc.).
- Attend Student-Parent-Teacher Conferences. Read the school newsletter and support school activities.

Student Responsibilities

Section 31 of the *Education Act* states that a student, as a partner in education, has the responsibility to:

- a) attend school regularly and punctually
- b) be ready to learn and actively engage in and diligently pursue the student's education
- c) ensure that the student's conduct contributes to a welcoming, caring, respectful and safe learning environment that respects diversity and fosters a sense of belonging
- d) respect the rights of others in the school
- e) refrain from, report and not tolerate bullying or bullying behaviour directed toward others in the school, whether it occurs within the school building, during the school day or by electronic means
- f) comply with the rules of the school and the policies of the board
- g) co-operate with everyone authorized by the board to provide education programs and other services
- h) be accountable to the students' teachers and other school staff for the student's conduct
- i) positively contribute to the student's school and community

Student Code of Conduct

Our Code of Conduct ensures that our school promotes a culture of wellness that:

- Establishes and maintains a welcoming, caring, respectful, and safe learning environment for all students, staff, families and the greater community.
- Establishes and maintains an appropriate balance between individual and collective rights, freedoms, and responsibilities in the school community.
- Establishes and publishes expectations for student behavior while at school, at a school-related activity, or while engaging in an activity at any time that may have an impact on others in the school.
- Ensures that a healthy environment exists that is free from fear, discrimination and harassment while promoting inclusive strategies to ensure that every student is treated with respect and dignity.



RESPECT

Treating All With Value and Care

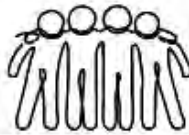
Being Safe

I can protect and take care of myself and others.



Being Kind

I can treat myself and others well with my words and actions.



Being Responsible

I can make good choices by doing what is right for myself, others and my community.



Be Respectful By...

Being Safe

Stop and Think



Being Kind

Be Polite

PLEASE...

Being Responsible

Be Honest



Hands to Self



Be Helpful



Follow Expectations



Ask for Help



Include Others



Respect Property & Equipment

